



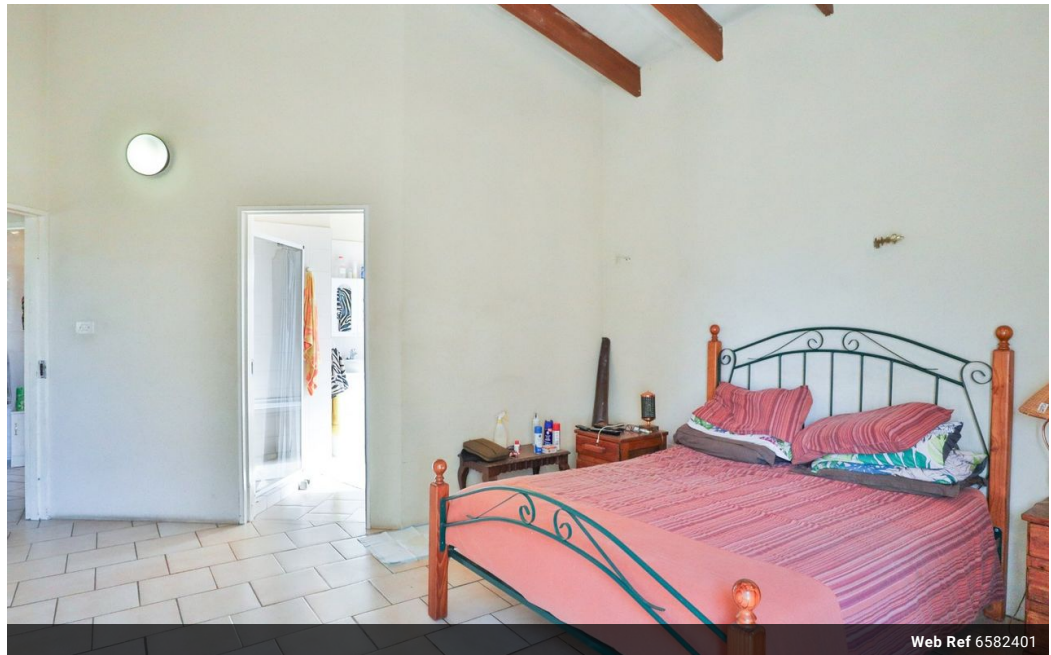
**Ronelda Richter**  
 Non-Principal Property Practitioner  
 Registered with PPRA (FFC 115 413 0)  
 0824553170

ronelda@cleproperties.co.za

Contact Head Office - Kempton Park

011 9758537

12 Duffton Way  
 Aston Manor  
 Kempton Park



Web Ref 6582401



**R11,000,000**

**Monthly Bond Repayment** R113,540.72  
 Calculated over 20 years at 11% with no deposit.

**Transfer Costs** R1,109,037.00    **Bond Costs** R96,474.50

These calculations are only a guide. Please ask your conveyancer for exact calculations.

 3     2

**Eighty Five Hectare Fenced Farm with Riverfrontage Inside DFINOKENG Big Five Game Reserve.**

Eighty Five Hectare Fenced Farm with Riverfrontage Inside DFINOKENG Big Five Game Reserve. Located only an hour's drive from OR Tambo Airport and Forty minute's from Pretoria.

Dwelling Features:

- Patio
- Lounge
- Dining Room
- Kitchen
- Three Bedrooms
- Two Full Bathrooms
- Fireplace
- Built-in Bar/Braai
- Sparkling Pool
- Solar Geyser
- Ekstras:
- Game Fencing
- Cold Room
- Game Reserve

**Features**

Interior		Exterior		Sizes	
Bedrooms	3	Security	Yes	Land Size	84Ha
Bathrooms	2	Dom. Accom.	1		
Kitchens	1	Pool	Yes		
Recep. Rooms	2				