



## 2 Bedroom Flat For Sale in Sandown



**Cheryl Anthony**

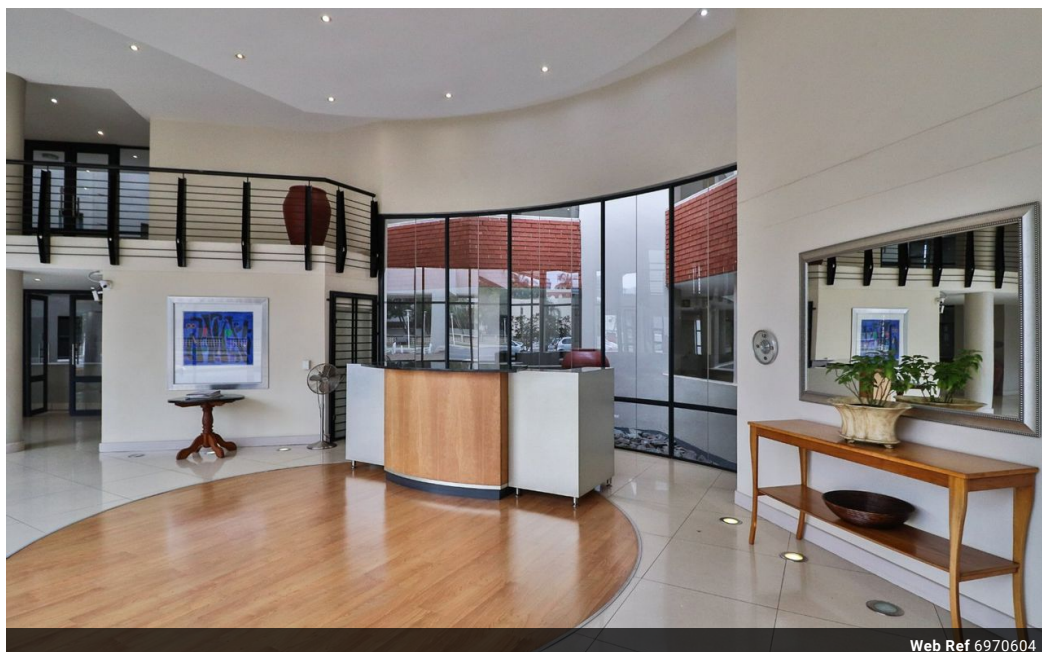
Non-Principal Property  
Practitioner  
Registered with PPRA  
(FFC 113 742 6)  
0824483536

cherylann@cleproperties.co.za

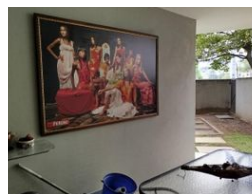
Contact Northern Suburbs

011 0271878

Shop 2B  
Northlands Corner  
Corner Witkoppen Road and Newmarket  
Street  
North Riding  
Randburg



Web Ref 6970604



**R2,500,000**



2



2

**Monthly Bond Repayment** R25,804.71

Calculated over 20 years at 11% with no deposit.

**Transfer Costs** R115,720.00 **Bond Costs** R38,415.00

These calculations are only a guide. Please ask your conveyancer for exact calculations.

**Monthly Levy** R5,200 **Special Levy** R1,700

Calling all Executives!

Airy and bright, this 2 bedroom 2 bathroom contemporary ground floor apartment offers modern sophistication and effortless luxury. This apartment comes fully furnished.

Dining area with central kitchen and lounge leading onto a private garden perfect for entertaining. Spacious Master en suite bedroom plus dressing area.

2nd bedroom with loads of cupboards and separate bathroom.

This property features a heated pool, steam room and fabulous gym for relaxation.

Unparalleled convenience in a prime location with access to top-tier amenities, including:

- 24-hour security with guard house and key code to enter
- 24 hours Conceirge desk
- Convenience of 2 basement parking bays and loads of visitors parkings
- Boardroom for private meetings.
- Sandton CBD, Sandton City & Nelson...

### Features

| Pets Allowed |   | Yes |            |     |                   |
|--------------|---|-----|------------|-----|-------------------|
| Interior     |   |     | Exterior   |     |                   |
| Bedrooms     | 2 |     | Security   | Yes |                   |
| Bathrooms    | 2 |     | Pool       | Yes |                   |
| Kitchens     | 1 |     |            |     |                   |
| Recep. Rooms | 2 |     |            |     |                   |
|              |   |     | Sizes      |     |                   |
|              |   |     | Floor Size |     | 108m <sup>2</sup> |