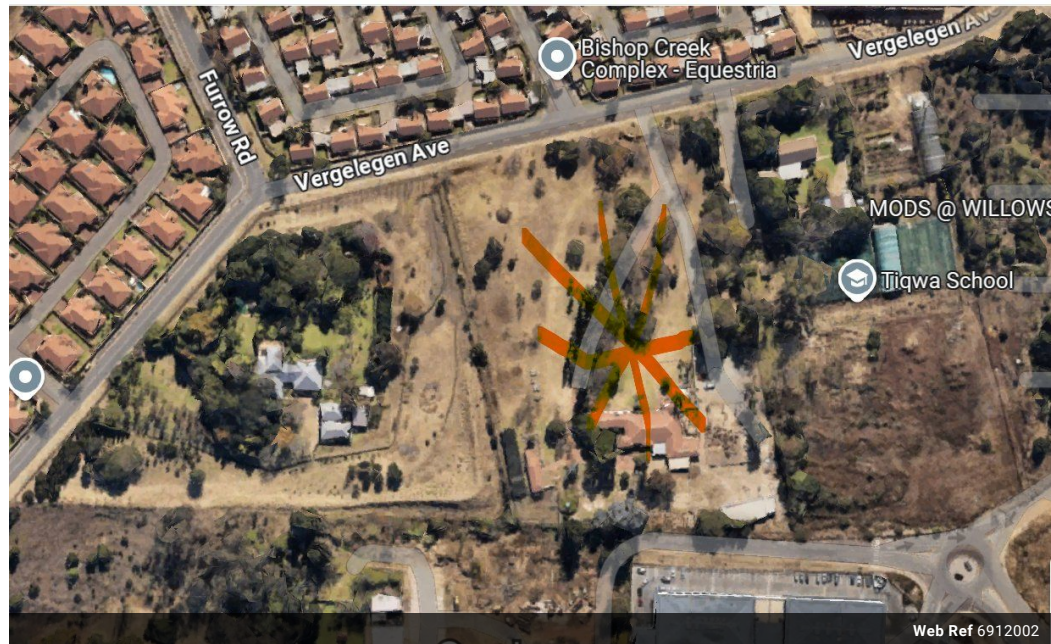


Alett Nel
 Non-Principal Property Practitioner
 Registered with PPRA (FFC 121 758 7)
 0784226651
 a.nel@cleproperties.co.za

Contact Head Office - Kempton Park

011 9758537

12 Duffton Way
 Aston Manor
 Kempton Park



R23,000,000

Monthly Bond Repayment R237,403.33

Calculated over 20 years at 11% with no deposit.

Transfer Costs R2,662,371.00 **Bond Costs** R132,285.00

These calculations are only a guide. Please ask your conveyancer for exact calculations.

23,400m² Vacant Land For Sale in Willow Glen, Willow Park Manor

PRIME LOCATION – REZONING PROCESS FOR HIGH DENSITY HOUSING AND COMMERCIAL/OFFICES IN FAST DEVELOPING EQUESTRIA, IN FINAL PHASE OF APPROVAL

**** PRICE IS VAT EXCLUSIVE

The high-density housing- and commercial/office development, in Equestria, just off Lynnwood Road and Solomon Mahlangu Avenue, is now in the final stage of approval.

23 400 m² destined for mixed use zoning for offices and high-density two and three bedroom housing apartments in the heart of the fast-expanding Pretoria East, consists of the following:

1. 11 962 m² for commercial/office use and approved for three floors with separate entrances from Meerlust Road and Solomon Mahlangu Avenue;
2. 10 520 m² for high density residential and approved for 67 two and three bed units with entrance from Vergelegen Avenue.

In close proximity to:

- Main

Features