

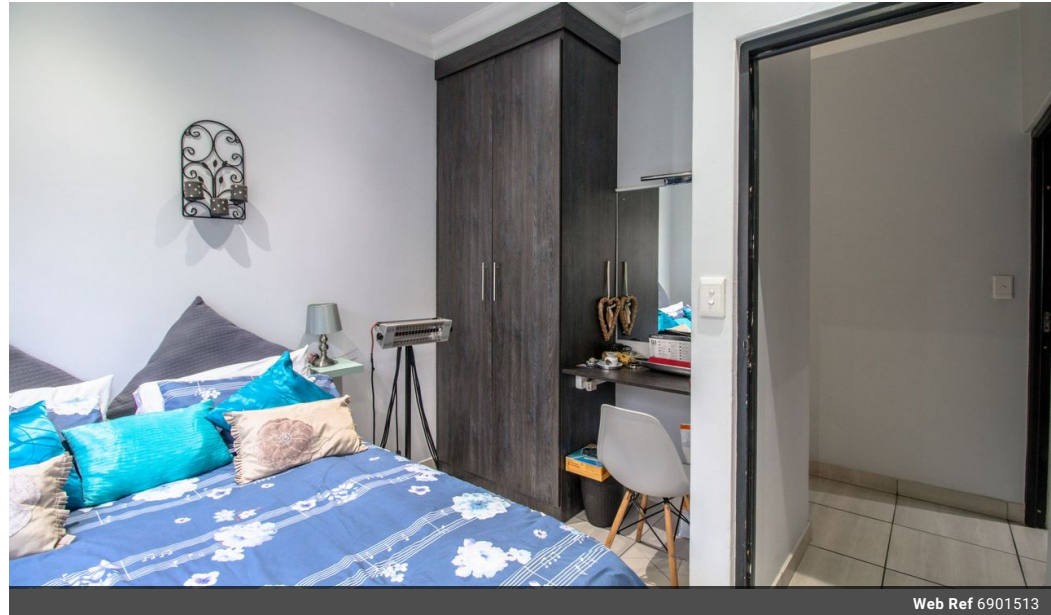


Johann Lochner
0739420584
JL@cleproperties.co.za

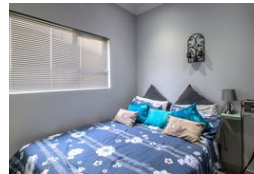
Contact Bonaero Park

011 3954661

Shop 31 Aero Centre
Cnr Templehof
South & Atlas Road
Bonaero Park



Web Ref 6901513



R1,799,000



Monthly Bond Repayment R18,569.07
Calculated over 20 years at 11% with no deposit.

Transfer Costs R60,979.00 **Bond Costs** R30,875.00

These calculations are only a guide. Please ask your conveyancer for exact calculations.

Monthly Levy R1,100 **Monthly Rates** R1,430

3-bedroom, 2-bathroom home

3-bedroom, 2-bathroom home
Dear Happy New Owner...

COUNTRY ROADS, TAKE ME HOME ...

You will find this attractive and up market home in the popular neighbourhood of Pomona.

Step into a tiled entrance hall which leads into a spacious open plan lounge, dining room and modern kitchen. The lounge features a ceiling fan as well as an aircon for those warm summer days.

The kitchen is convenient, smart and modern with melamine cupboards, tiled floors, a scullery with a double sink and space for electrical appliances. For your cooking experiences a gas stove with under counter oven also forms part of this lovely kitchen.

The main bedroom has an en suite with a shower. Tiled flooring also adds to the elegance of this property. Each of the three bedrooms is well sized with enough cupboard space and natural light shining...

Features

Pets Allowed		Interior		Exterior		Sizes	
	Yes	Bedrooms	3	Garages	2	Land Size	262m ²
		Bathrooms	2	Carports / Parkings	2		
		Kitchens	1	Security	Yes		
		Recep. Rooms	3	Pool	Yes		