

NEW



Kobus Greyling
 Non-Principal Property Practitioner
 Registered with PPRA (FFC 122 040 7)
 0842760824
 kobus@cleproperties.co.za

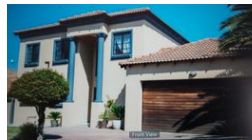
Contact Head Office - Kempton Park

011 9758537

12 Duffton Way
 Aston Manor
 Kempton Park



Web Ref 6730110



R2,400,000

Monthly Bond Repayment R24,772.52
 Calculated over 20 years at 11% with no deposit.

Transfer Costs R105,552.00 **Bond Costs** R36,530.00
 These calculations are only a guide. Please ask your conveyancer for exact calculations.

 3  2.5  2

STUNNING CLUSTER !

This stunning, spacious home features modern, immaculate finishes and offers 3 bedrooms and 2 bathrooms. The main bedroom includes an en-suite bathroom with a bath, vanity, and toilet, all finished with contemporary touches. The second bathroom features a shower, vanity, and toilet. The main bedroom is exceptionally large and has laminated flooring, which extends throughout the home. All the bedrooms are generously sized with ample cupboard space. The living area exudes warmth and elegance, enhanced by beautiful down-lighting. It has an open-plan layout with a large, modern kitchen. The kitchen has ample cupboard space. For security, the estate offers controlled access, electric fencing, and Trelleidoors on all entrances. Additionally, the property includes a spacious double garage with remote access. The estate is...

Features

Pets Allowed	Yes			
Interior		Exterior		Sizes
Bedrooms	3	Garages	2	Land Size
Bathrooms	2.5	Security	Yes	409m ²
Kitchens	1	Pool	No	
Recep. Rooms	4			