



**Henry Nieuwenhuizen**  
 Candidate Property Practitioner  
 Registered with PPRA (FFC 114 071 2)  
 0769614434  
 henry@cleproperties.co.za

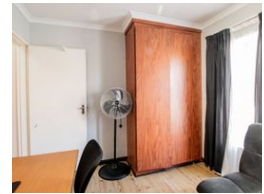
Contact Bonaero Park

011 3954661

Shop 31 Aero Centre  
 Cnr Templehof  
 South & Atlas Road  
 Bonaero Park



Web Ref 6053371



**R1,565,000**

3 Bedrooms, 3 Bathrooms, 1 Carport

**Monthly Bond Repayment** R16,153.75  
 Calculated over 20 years at 11% with no deposit.

**Transfer Costs** R47,735.00    **Bond Costs** R28,990.00

These calculations are only a guide. Please ask your conveyancer for exact calculations.

**Monthly Levy** R900    **Monthly Rates** R921

### Stunning 3-bedroom, 3-bathroom Home

Stunning 3-bedroom, 3-bathroom Home  
 Dear Happy New Owner...

LIGHTLY TRAVELLED STREET, A STEAL OF A DEAL!!!

This is absolutely a gem "hidden" in the popular Featherdale Estate. You will find an attractive and up market home in this exclusive complex.

Step into a tiled open plan kitchen and a spacious lounge. The kitchen is convenient, smart and modern with wooden cupboards, a four-plate stove with under counter oven, as well as a pantry cupboard.

The main bedroom has an en suite with a shower. Each of the 3 bedrooms is well sized with enough cupboard space and natural light shining through. Two of the bedrooms features laminating flooring and one tiled flooring. The three bathrooms are modern and pleasing to the eye.

A tandem garage as well as a single carport for your vehicles also forms part of this home....

### Features

Pets Allowed		Yes			
<b>Interior</b>					
Bedrooms	3	<b>Exterior</b>		<b>Sizes</b>	
Bathrooms	3	Garages	1	Land Size	261m <sup>2</sup>
Kitchens	1	Carports / Parkings	1		
Recep. Rooms	1	Security	Yes		
		Pool	No		