



**Dewald van Deventer**

Non-Principal Property Practitioner  
Registered with PPRA  
(FFC 122 262 2)

0837081089

dewald@cleproperties.co.za

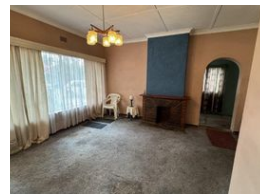
Contact Head Office - Kempton Park

011 9758537

12 Duffton Way  
Aston Manor  
Kempton Park



Web Ref 6950839



**R1,050,000**

 4  2.5  2

**Monthly Bond Repayment** R10,837.98

Calculated over 20 years at 11% with no deposit.

**Transfer Costs** R32,749.00 **Bond Costs** R25,220.00

These calculations are only a guide. Please ask your conveyancer for exact calculations.

**Monthly Rates** R1,034

### A RENOVATOR'S DREAM – TRANSFORM THIS HIDDEN GEM IN TULISA PARK!

#### A RENOVATOR'S DREAM – TRANSFORM THIS HIDDEN GEM IN TULISA PARK!

Are you a visionary buyer, a seasoned renovator, or a property investor looking for the perfect fixer-upper? Look no further! This large estate late property in the sought-after neighborhood of Tulisa Park is bursting with potential and character, just waiting for the right owner to restore it to its former glory.

#### A Home with Solid Bones & Endless Possibilities

Boasting a strong foundation and structure, this home offers an incredible blank canvas for those with a creative eye. Whether you're looking to modernize the interiors, add personal touches, or completely revamp the space, this property offers an exciting opportunity to create your dream home or a profitable investment!

#### Property Highlights:

4 Generously Sized Bedrooms – Perfect for a growing family or...

### Features

Pets Allowed		Yes			
<b>Interior</b>					
Bedrooms	4	<b>Exterior</b>		<b>Sizes</b>	
Bathrooms	2.5	Garages	2	Land Size	1,110m <sup>2</sup>
Kitchens	1	Carports / Parkings	2		
Recep. Rooms	3	Security	No		
		Dom. Accom.	1		
		Pool	No		