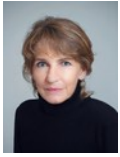


UNDER OFFER



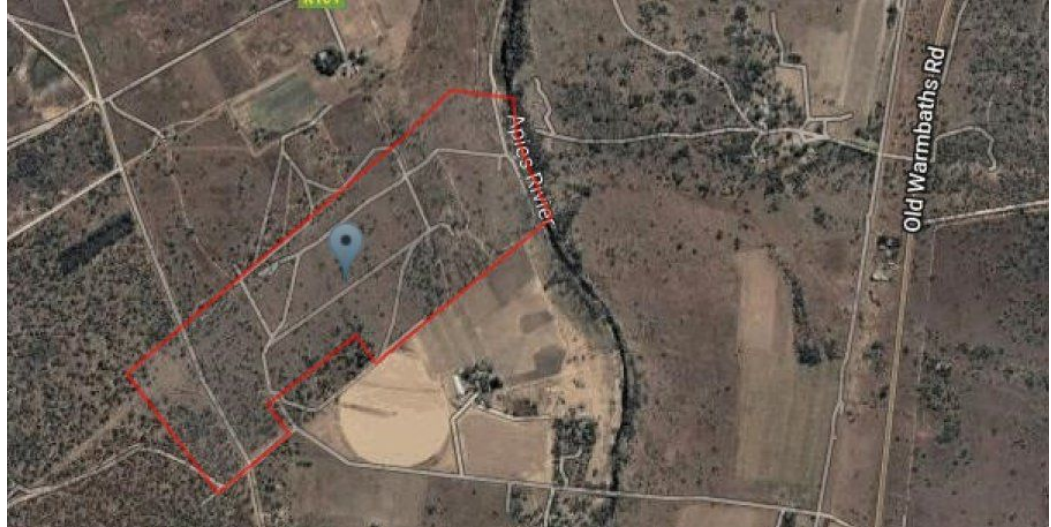
Alett Nel

Non-Principal Property Practitioner
Registered with PPRA (FFC 121 758 7)
0784226651
a.nel@cleproperties.co.za

Contact Head Office - Kempton Park

011 9758537

12 Duffton Way
Aston Manor
Kempton Park



Web Ref 6093102



R5,500,000

Monthly Bond Repayment R56,770.36

Calculated over 20 years at 11% with no deposit.

Transfer Costs R462,807.00 **Bond Costs** R65,785.00

These calculations are only a guide. Please ask your conveyancer for exact calculations.



200 HECTARE FERTILE AGRICULTURAL LAND ON THE APIES RIVER WITH TWO HOUSES AND WATER RIGHTS

200 HECTARE FERTILE AGRICULTURAL LAND ON THE APIES RIVER WITH TWO HOUSES AND WATER RIGHTS

200 Hectares with of fertile agricultural land situated on the Apies River, with water rights.

Area well-known for growing lucerne and other cash crops.

Fertile agricultural land is also ideal for the development of high-density housing in the rapidly expanding area adjacent to Hammanskraal where there is a huge demand for additional housing.

Two well-built houses with electric fencing.

DETAILED INFORMATION:

- Eskom – 3 Phase
- House 1: (300sqm)
- Three bedrooms
- Two bathrooms

Features

Exterior		Sizes	
Security	No	Land Size	200Ha
Pool	No		