

Janique Steenberg
0646868388
janique@cleproperties.co.za

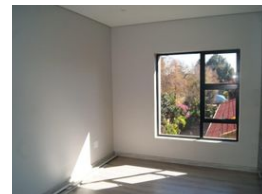
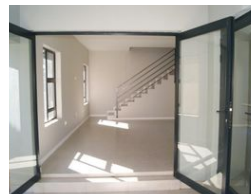
Contact Head Office - Kempton Park

011 9758537

12 Duffton Way
Aston Manor
Kempton Park



Web Ref 6558055



R1,999,999

Monthly Bond Repayment R20,643.76
Calculated over 20 years at 11% with no deposit.

Transfer Costs R75,205.94 **Bond Costs** R32,760.00

These calculations are only a guide. Please ask your conveyancer for exact calculations.

 3  2.5  2

Brand New Development – Modern full title Double-Story house

Brand New Development – Modern full title Double-Story house

Discover the epitome of contemporary living in this stunning double-story unit, spanning 150 square meters. Recently completed, this brand-new home boasts exceptional finishes and a stylish design, ready for immediate occupancy. The spacious lounge and dining area feature elegant, tiled floors, creating a seamless flow throughout the ground floor. Large glass doors lead to a covered patio, perfect for entertaining, and extend into a beautifully landscaped garden. A thoughtfully designed guest toilet is conveniently located downstairs, along with ample storage space under the staircase. The modern kitchen is equipped with a 4-plate gas hob and stove, complemented by an extractor fan. There is ample counter space for all your appliances and designated areas for...

Features

Pets Allowed	Yes				
Interior		Exterior		Sizes	
Bedrooms	3	Garages	2	Land Size	130m ²
Bathrooms	2.5	Security	Yes		
Kitchens	1	Pool	No		
Recep. Rooms	2				